

**PROPOSAL FOR ARCHITECTURAL SERVICES
MADISON COUNTY SECURITY / HEALTH GLAZING IMPROVEMENTS**

Proposal Date: May 1, 2020

Owner:

Madison County Board of Supervisors
125 West North Street
P.O. Box 608
Canton, MS 39046

Architect:

JH&H Architects/Planners/Interiors, P.A.
1047 North Flowood Drive
Flowood, Mississippi 39232-9533

For the following Project:

Facility Assessment, Planning and Construction Documents for providing Security / Health Glazing for Madison County Designated Facilities, as Scope defines.

1. Project Description

JH&H Architects | Planners | Interiors, P.A. will provide Facility Assessments and Planning Services for Glazing Improvements to Existing Facilities for the purpose of providing Health and/or Security needs, as designated by Madison County. The Facility Assessment & Planning Services to be provided will analyze the Programmed Needs for Glazing Improvements to meet Health and/or Security Needs for County Staff, Citizens, Clients and Customers. This generally will include Retrofitting and/or Renovation of Existing Counters / Openings in Public Reception and Customer Service Spaces.

2. Scope of Services to be Provided

Phase I:

- A. Meet with County Representatives and/or Department Heads to establish Goals and Objectives.
- B. Review and Analyze Current Conditions and Construction.
- C. Provide Report, Analysis, Conceptual Drawings, Cost Projections and Recommendations.

a professional association

Phase II:

- D. Provide Construction and Bidding Documents.
- E. Receive Bids, Recommendations to Board and Prepare Construction Contract.
- F. Provide Construction Administration Services to include Construction Review of Contractor Work, Review Contractor Submittals, Certify Contractor Payment Applications and Review Contractor Closeout.

3. Fees & Costs for Basic Services

- A. Fees for Basic Services shall be at the Hourly Rates as listed in Paragraph 4.
- B. Reimbursable Costs shall be as listed in Paragraph 5.

4. Hourly Rates

Principal	\$200/HR
Architect/Engineer/Project Manager	\$150/HR
Interior Designer	\$125/HR
Architect Intern	\$100/HR
CADD/Technical	\$85/HR
Clerical/Administrative	\$50/HR

5. Reimbursable Costs

Reimbursable cost may include the following items.

Commercial Printing	Actual Cost
In-House Printing	
• 8 ½ x 11 black & white copies	\$0.15/copy
• 11 x 17 black & white copies	\$0.25/copy
• 8 ½ x 11 color copies	\$0.50/copy
• 11 x 17 color copies	\$1.00/copy
• Printing of drawings (24 x 36)	\$1.00/copy
• Printing of Drawings (Half-Size)	\$0.75/copy
• Mileage	\$0.55/mile
• Computer plots	\$1.00/sheet
• Specialty or Engineering Consultant	1.10 x Direct Cost
• Other items i.e.: photos, presentation boards, mailing, etc.	Actual Cost

6. Schedule

Our staff of professionals are immediately available to begin work on your project. It is anticipated the time required to complete each Phase would be as listed below. Our intent is to work within the schedule set forth by the Board of Supervisors and the County's Staff availability.

- Phase I 1-2 Months (Depending on Number of Facilities)
- Phase II 1-2 Months (Depending on Number of Facilities)

7. Owner Furnished Items

- A. Existing Drawings (If Available)
- D. Other available Pertinent Data

8. Additional Services

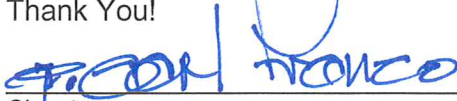
Additional Services, if requested by Owner, will be provided at the Hourly Rates contained herein or as Mutually Agreeable to both Owner and Architect.

9. Payment

Payment will be due within 30 days of completion of each phase of the Work.

JH&H sincerely appreciates the Board of Supervisors interest and this opportunity to provide Architectural Services to assist Madison County with your project.

Thank You!



Signature

J. Carl Franco, AIA, LEED AP

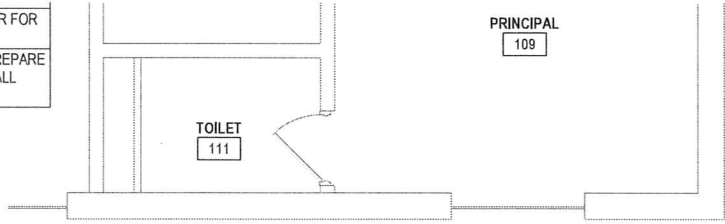
Print

Principal

Title

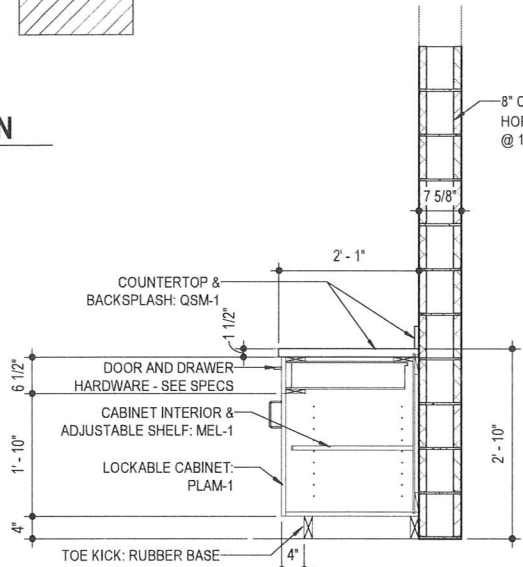
JH&H Architects/Planners/Interiors, P.A.

3 VCT. CLEAN AND PREPARE FLOOR FOR
 AT CEILING IN AREA INDICATED. PREPARE
 MATCH EXISTING HEIGHT. REINSTALL
 XTURE.

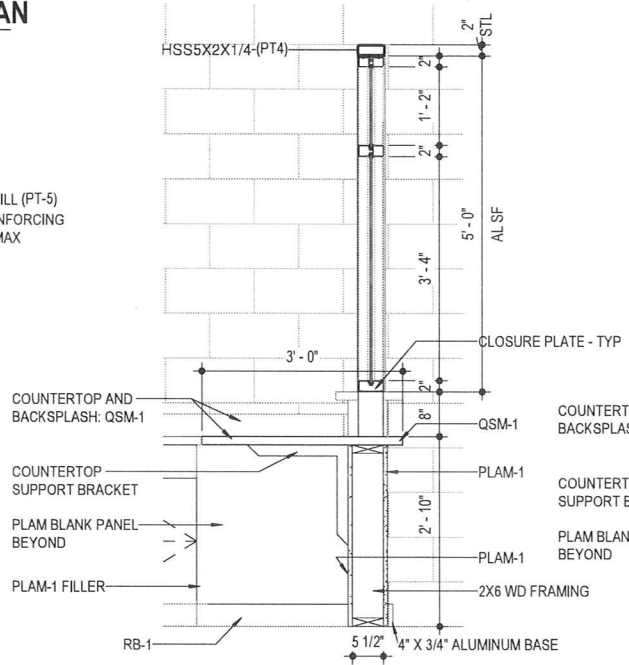


3 DEMO PLAN
 1/4" = 1'-0"
 NORTH

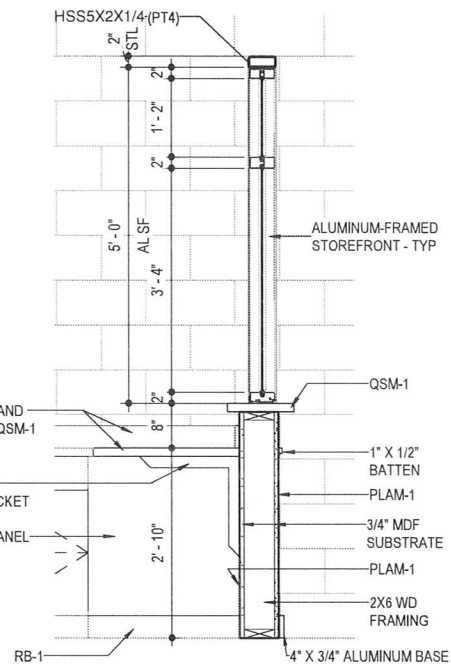
Y PLAN
 0'-0"



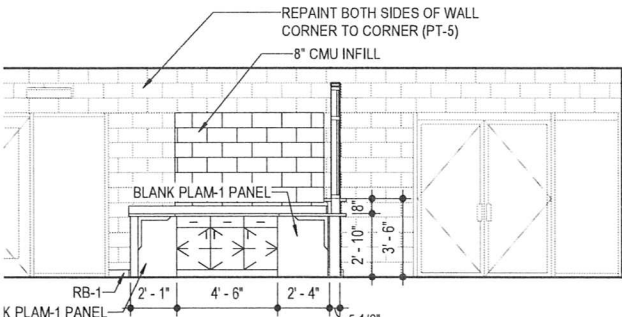
6 SECTION
 3/4" = 1'-0"



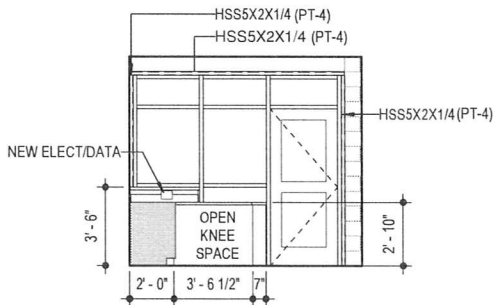
7 SECTION
 3/4" = 1'-0"



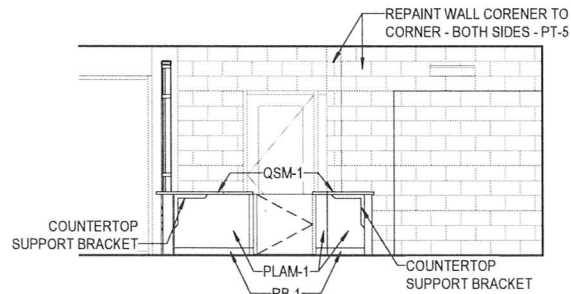
8 SECTION
 3/4" = 1'-0"



11 INTERIOR ELEVATION
 1/4" = 1'-0"



12 INTERIOR ELEVATION
 1/4" = 1'-0"



13 INTERIOR ELEVATION
 1/4" = 1'-0"

5. ALL ELECTRICAL WIRING FOR DOOR HARDWARE AND ACCESS CONTROL SHALL BE RAN IN RACEWAYS THROUGH STRUCTURAL STL TUBING WHERE APPLICABLE.
 6. ACCESS CONTROL CONTRACTOR SHALL BE RESPONSIBLE FOR INSTALLATION AND COORDINATION OF ELECTRICAL RACEWAYS WITH STEEL AND STOREFRONT CONTRACTORS. ALL WIRING SHALL BE ROUTED AND CONCEALED WHERE POSSIBLE. VERIFY ROUTING WITH ARCHITECT PRIOR TO ROUGH-IN. ACCESS CONTROL CONTRACTOR SHALL INCLUDE IN HIS/HER BID THE PRICE THE COST OF INSTALLATION OF RACEWAYS BY A LICENSED AND BONDED ELECTRICIAN AS REQ'D BY STATE LAW.

Project	STEWART
Architect	20_102
Project Number	03.26.2020
Date	TS,EA
Drawn by	PJB
Checked by	

ENTRANCE MODIFICATIONS TO VARIOUS SCHOOLS PHASE II

MADISON COUNTY SCHOOLS



EAST FLORA ELEMENTARY SCHOOL

A131

FOR PRINT SCALE VERIFICATION THE TITLEBLOCK OPENING IS 22.5 x 24.136

3

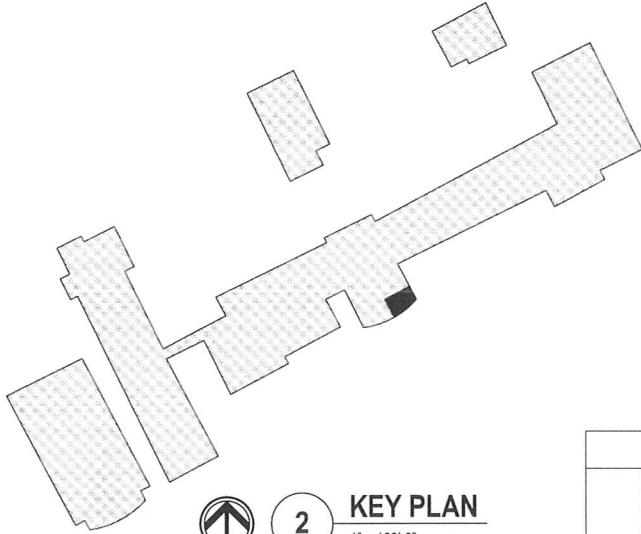
4

5

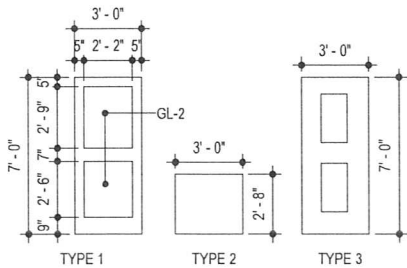
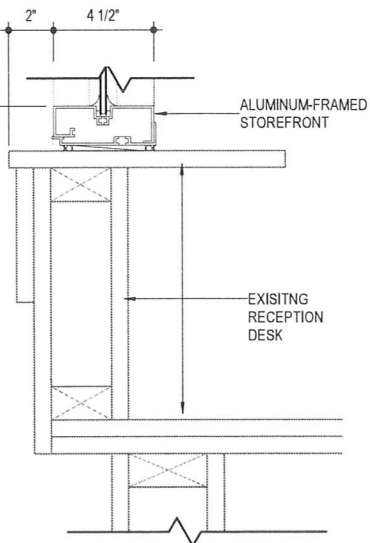
6

1. CONTRACTOR TO FIELD VERIFY ALL MEASUREMENTS PRIOR TO SUBMITTING BID AND BEFORE CONSTRUCTION OR ORDERING ANY MATERIAL QUANTITIES.
2. ALL NEW STEEL STRUCTURE TO BE PAINTED.
3. ALL STEEL CONNECTIONS TO BE WELDED UNLESS OTHERWISE NOTED. ALL WELDS SHALL BE 3/16" FILLET WELD, GROUND SMOOTH BEFORE PAINTING.
4. WHERE BRICK IS TO BE REMOVED & RELAID, CONTRACTOR WILL MATCH MORTAR COLOR TO EXISTING MORTAR. SAMPLES SUBJECT TO REVIEW BY ARCHITECT.
5. ALL ELECTRICAL WIRING FOR DOOR HARDWARE AND ACCESS CONTROL SHALL BE RAN IN RACEWAYS THROUGH STRUCTURAL STL TUBING WHERE APPLICABLE.
6. ACCESS CONTROL CONTRACTOR SHALL BE RESPONSIBLE FOR INSTALLATION AND COORDINATION OF ELECTRICAL RACEWAYS WITH STEEL AND STOREFRONT CONTRACTORS. ALL WIRING SHALL BE ROUTED AND CONCEALED WHERE POSSIBLE. VERIFY ROUTING WITH ARCHITECT PRIOR TO ROUGH-IN. ACCESS CONTROL CONTRACTOR SHALL INCLUDE IN HIS/HER BID THE PRICE THE COST OF INSTALLATION OF RACEWAYS BY A LICENSED AND BONDED ELECTRICIAN AS REQ'D BY STATE LAW.

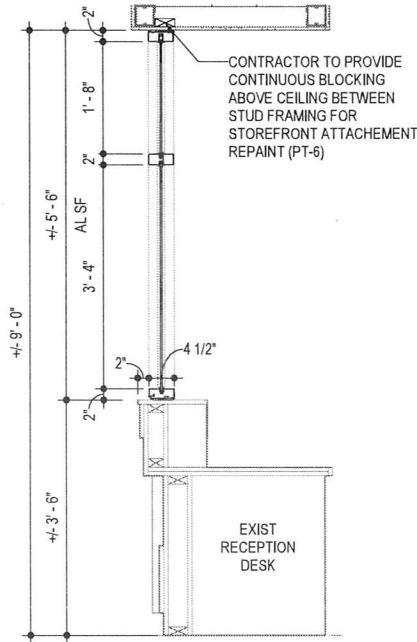
STING FIRE ALARM ROBE TO REMAIN



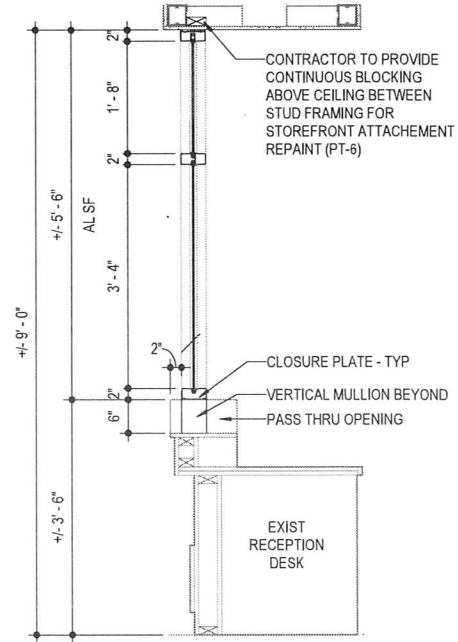
2 KEY PLAN
1" = 100'-0"



DOOR TYPES



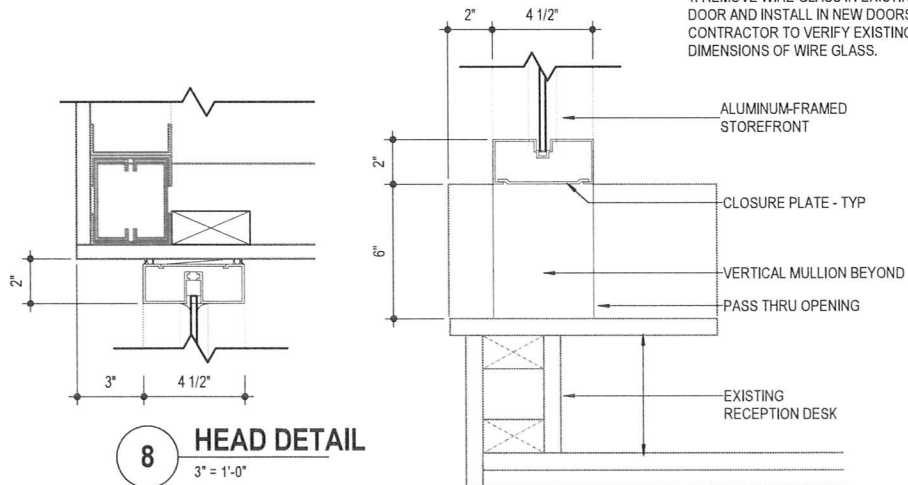
4 SECTION
3/4" = 1'-0"



5 SECTION
3/4" = 1'-0"

VJ DOOR SCHEDULE																	
DOOR NO.	PAIR	DOOR							FRAME			FIRE RATING	HARDWARE SET	COMMENTS	DOOR NO.		
		SIZE				MAT.	TYPE	LOUVER	MAT.	TYPE	DETAILS						
		WIDTH	HEIGHT	THICK.	HEAD						JAMB					SILL	
A501		3'-0"	7'-0"	0' - 1 3/4"	AL	1	-	AL	SF1	8/A141	9/A141	-	-	5	DAC	A501	
A502	PR	6'-0"	7'-0"	0' - 1 3/4"	WD	EX	-	HM	EX	-	-	-	20 MIN	6	EXIST, DAC, 1	A502	

DAC : DOOR ACCESS CONTROL
1. REMOVE WIRE GLASS IN EXISTING DOOR AND INSTALL IN NEW DOORS. CONTRACTOR TO VERIFY EXISTING DIMENSIONS OF WIRE GLASS.



8 HEAD DETAIL
3" = 1'-0"



A Professional Association
Franco Bagley/Lewis Wood

© 2020

JH&H Architects
Planners, Interiors, PA
1047 North Flowood Drive
Flowood, MS 39232-9533
p.601.948.4601 f.601.355.6200

Revisions
1 _____
2 _____
3 _____
4 _____

These drawings are the property of the architect and are not to be used on other projects or extensions except by agreement in writing with the architect.

Project: **STEWART**
Architect: _____
Project Number: **20_102**
Date: **03.26.2020**
Drawn by: **TS**
Checked by: **PJB**

ENTRANCE MODIFICATIONS TO VARIOUS SCHOOLS PHASE II
MADISON COUNTY SCHOOLS



